



# The Future of Working Capital Solutions

## For Private Equity Houses



PROVEN TECHNOLOGY PARTNER SUPPORTING SOME OF THE WORLD'S LARGEST BRANDS



CBRE





# Invevo delivers Working Capital improvements and ROI within 60 days.

- ⚙️ Automated Receivables & Risk Management
- ⚙️ Data Analytics and Performance Trending
- ⚙️ User Task Management
- ⚙️ Customer Self Service and Global Check-out



*"Invevo automates the entire invoice-to-cash lifecycle, driving significant improvement in Working Capital"*

Richard Moreton - Invevo CEO



# Invevo For Private Equity Houses

- Tailored for Private Equity portfolio companies
- Incorporated real time KPI dashboards
- Track debtor book performance and cashflow
- Digital Transformation enablement

To find out more go to [www.invevo.com/private-equity](http://www.invevo.com/private-equity)

# Invoice To Cash AR Platform

## Driving Working Capital Improvements

### Automated AI Driven Receivables

Collections, Dispute Management, Payments, Risk Management

### Become a Data Driven Organisation

KPI dashboards for CFO's, Collectors & Credit Managers.

### Customer Self Service

Multi Language, Multi Currency, Mobile First Global check-out

### User Task Management

Prioritises and tracks user actions to increase productivity.

Travis Perkins reduced **bad debt** by **65%**.

UBM increased **user productivity** by **30%**.

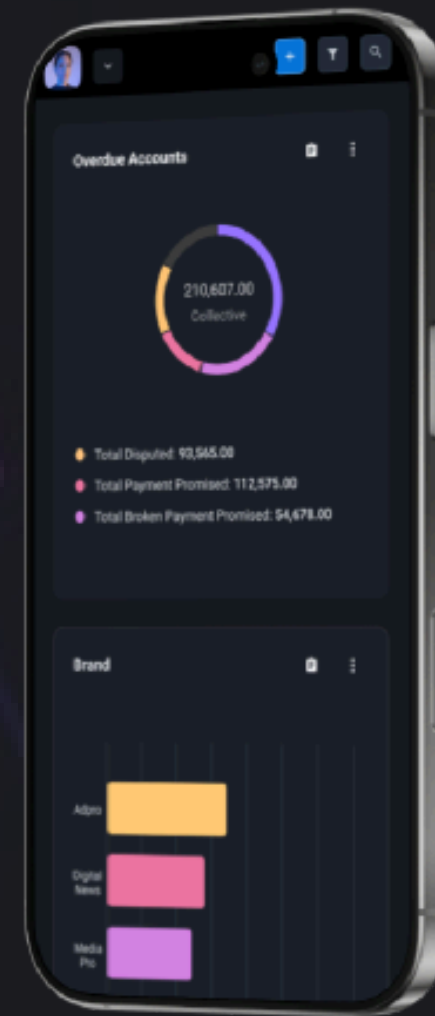
Informa reduced **ops costs** by **£240k** per annum.

The Adecco Group achieved **£35m** additional working cap in year 1

Invevo clients reduce manual tasks by upto **80%**

# Designed For Global Capability

- Soc2 Type 2 Compliant
- Any language
- Any currency
- Unlimited Users
- Deployed in 60 countries



*"Whether you're optimising one asset or transforming an entire portfolio, Invevo enables your teams to take control of AR, unlock trapped cash, and drive measurable value creation."*

**Richard Moreton, Invevo CEO**

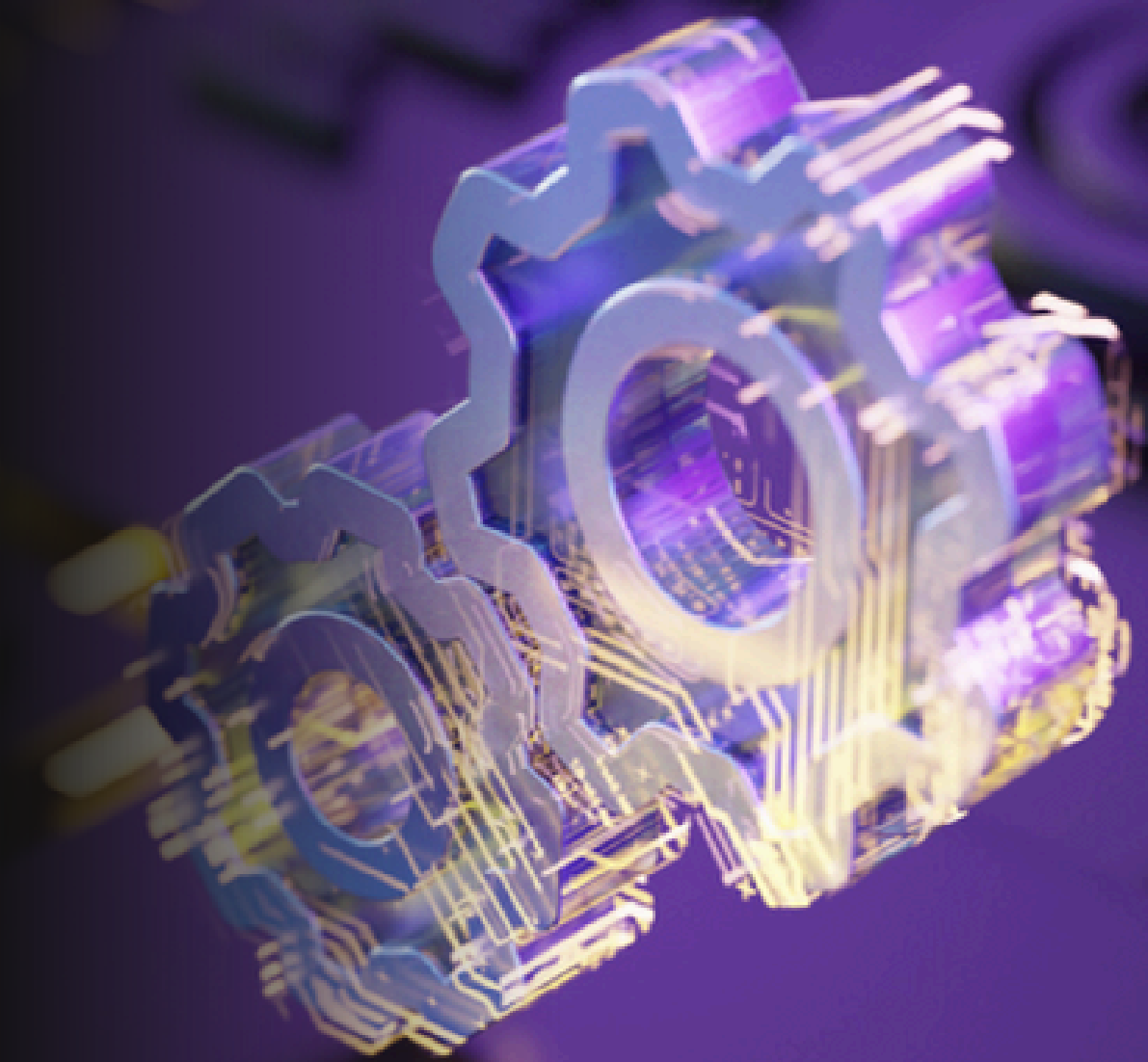


**Scan to Book A  
Demo**

# Built For **User Collaboration**

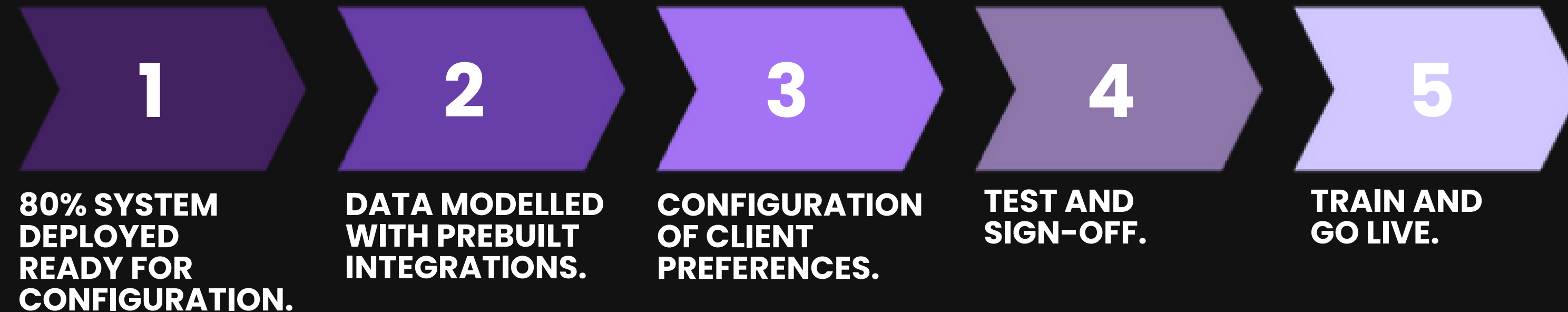
Designed to empower teams with real-time visibility, shared workflows, and seamless coordination across every user touchpoint

- Operating Partners
- CFOs & Portco Finance Teams
- Deal & Investment Teams
- Advisors & Shared Services



TIME TO VALUE

# How We Deliver Value Fast



A woman with glasses and a headset is sitting at a desk in a dimly lit office, looking out a window. The scene is illuminated with a soft purple light. The text is overlaid on the right side of the image.

# Typical Implementation Timelines

**Low Complexity = 1 Week** – Out the Box

**Medium Complexity = 2 weeks** – Bespoke Configuration

**High Complexity = 4 weeks** – Complex Data Structure



# Simple Pricing Low Cost Change

- ✓ Super users trained to make changes (low to no IT costs)
- ✓ Adjust workspaces, workflows and data model all through configurations
- ✓ Low set up fees, no hidden costs, no long terms contracts



Scan the **QR Code** to  
access our pricing indicator



# Our Support Model

Structured for responsiveness and continuity, our support model combines self-service tools, proactive monitoring, and dedicated expertise.

**24/7 Uptime availability – no maintenance windows**

**24/7 technical uptime support**

**Dedicated product expert support teams**

**Customer success teams to help you Build. Measure, Learn.**

Don't just take our word for it  
**What Our Customers Say**

*"Invevo created a bespoke solution to meet the unique needs of each part of our business—something most solutions can't handle. Now, our accounts teams follow a consistent and traceable process, regardless of location or business unit."*

**ELISABETH DOPPELHOFER**  
GLOBAL HEAD OF COLLECTIONS



*"With Invevo, we've gained the live credit information and business insight needed to make data-informed decisions, be proactive rather than reactive, deliver money in the bank and keep Adecco ahead of the competition."*

**ANNA MORRIS**  
GLOBAL PROCESS OWNER



# Book Your Demo

Ready to see Invevo in action?

Scan the QR Code

